



MPG PORTABLE
VIBRATING POKER DRIVE
OWNER'S MANUAL AND PARTS LIST



Distributed By

RUGGEDMADE

www.ruggedmade.com

MASALTA ENGINEERING CO., LTD

www.masalta.com.cn

Table of Contents

1. SAFETY INFORMATION

1.1 Safety Precautions	2
1.2 Operating Safety.....	3
1.3 Operator Safety while using Internal Combustion Engines.....	4

2. OPERATION

2.1 Operating Principle.....	5
2.2 Delivery Checks	5
2.3 Before Starting.....	5
2.4 To Start	5
2.5 To Stop	6
2.6 Operation.....	6
2.7 When Operation is Finished.....	6

3. MAINTENANCE

3.1 Periodic Maintenance Schedule.....	7
3.2 Lubrication.....	7
3.3 Spark Plug.....	8
3.4 Air Cleaner.....	8
3.5 Transporting.....	8
3.6 Storage.....	8
3.7 Trouble Shooting.....	9

4. TECHNICAL DATA

10

5. WARRANTY

11

6. MAINTENANCE RECORD

12

SAFETY INFORMATION

1.1 Safety Precautions

Before operating the machine, read both the manual and the engine manual carefully to become familiar with the location and proper use of all controls. Do not allow untrained or unauthorized personnel, especially children, to operate this machine. Use only the parts authorized by the factory for service.

This manual contains DANGER, WARNING, CAUTION callouts which must be followed to reduce the possibility of personal injury, damage to the equipment, or improper service.



This is the safety alert symbol. It is used to alert you to potential personal injury hazards. Obey all safety messages that follow this symbol to avoid possible injury or death.



DANGER

DANGER indicates a hazardous procedure which, if not avoided, will result in serious or mortal injury.



WARNING

WARNING indicates a danger or hazardous procedure which, if not avoided, could result in serious or mortal injury.



CAUTION

CAUTION indicates a danger or hazardous procedure which, if not avoided, could result in damage to machinery or moderate injury.

1.2 Operating Safety

- I DO NOT modify the machine without the prior consent of the manufacturer. We do not assume responsibility for any accident due to equipment modification.
- I NEVER operate the machine in purpose for which it is not intended.
- I NEVER allow anyone to operate the machine without proper training. People operating the machine must be familiar with the risks and hazards associated with it. And familiar with the safety precautions and operation techniques.
- I ALWAYS operate the machine with all safety devices and guards in place and in working order.
- I ALWAYS wear appropriate clothing, wear hearing and eye protection when operating the machine.
- I DO NOT use the machine near flammable material or in explosive environments. The exhaust pipe can get very hot during operation. Sparks can be emitted from it, and these can ignite flammable material.
- I ALWAYS keep the area around the muffler free of debris such as leaves, paper, carton, etc. A hot muffler could ignite the debris and start a fire.
- I ALWAYS check that all controls are functioning properly immediately after start-up. DO NOT operate the machine unless all controls operate correctly.
- I NEVER operate the machine with the fuel cap loose or missing.
- I NEVER touch the engine, exhaust system of the machine. They are extremely hot during operation.
- I DO NOT touch the V-belt and the rotating parts during operation.
- I DO NOT clean or service the machine when it is running.
- I NEVER use the defective parts.
- I ALWAYS keep the machine clean and labels clear.
- I NEVER leave the machine running unattended.

SAFETY INFORMATION

1.3 Operator Safety while using Internal Combustion Engines

- I DO NOT smoke when refueling the engine or operating the machine.
- I DO NOT refuel a hot or running engine.
- I ALWAYS keep away from all hot or spark-generating objects when refuel the engine.
- I ALWAYS refill the fuel tank until the machine has cooled, and in a well-ventilated environments.
- I DO NOT spill fuel when refueling the engine.
- I ALWAYS take care to use the right type of fuel.
- I ALWAYS inspect the fuel leakage regularly.
- I NEVER perform any work on the machine while it is running. Before working on it, stop the engine and disconnect the spark plug wire to prevent accidental starting.
- I Avoid prolonged breathing of exhaust gases.
- I ALWAYS transport and handle fuel only when contained in approved safety containers.
- I Avoid touch or lean against hot exhaust pipes.
- I Allow engine to cool before performing any repairs or service.
- I ALWAYS keep the area around the muffler free of debris such as leaves, paper, cartons, etc. A hot muffler could ignite the debris and start a fire.
- I NEVER run the engine without air filter.

OPERATION

2.1 Operating Principle

The following instructions were compiled to provide you information on how to obtain long and trouble free use of the machine. Periodic maintenance of the machine is essential. Read the manual carefully and thoroughly familiarize yourself with the machine and all it's functions. Failure to do so may injure yourself or a bystander.

2.2 Delivery Checks

Immediately on taking delivery of your new machine and before putting it into service.

- I Read the operation manual completely—it could save a great deal of unnecessary expense.
- I Read the engine manual supplied.
- I Check the general condition of the machine – has it been damaged during delivery?
- I Check engine oil level.
- I Check fuel level.

2.3 Before Starting

Before starting the machine, check the following items:

- I All control levers are in the neutral position.
- I All bolted joints are tightened.
- I Fuel level.
- I Oil level in the engine
- I Air cleaner maintenance indicator.
- I Check the tension and condition of the V-belt.
- I ALWAYS inspect vibrating head for damage to threads.

NOTICE: Check the oil level in the engine before starting. The warranties are VOID if the machine run without oil.

2.4 To Start

Before starting the machine must know the location and function of all controls.

1. To start a cold engine, move the chock lever to the CLOSED position.
To start a warm engine, leave the chock lever in the OPEN position.
2. Press the priming bulb repeatedly until fuel can be seen in the clear-plastic fuel-return tube.
3. Turn the engine switch on the equipment to the ON position.
4. Pull the starter grip lightly until you feel resistance, then pull briskly. Return the starter grip gently.
5. If the chock lever was moved to the CLOSED position to start the engine, gradually move it to the OPEN position as the engine warms up.

OPERATION

2.5 To Stop

1. Move the throttle lever to the MIN position.
2. Turn the engine switch on the equipment to the OFF position.

2.6 Operation

1. Keep the bending radius of the flexible hose to a minimum during use.
2. DO NOT start the machine with the vibrator head immersed in the concrete mix. After the engine machine has started, immerse the vibrator head quickly into the concrete mix.
3. NEVER turn the vibrator off when it is immersed in the concrete.
4. When moving around the jobsite, do not drag the vibrator head and shaft on the ground.
5. DO NOT allow the head to vibrate against already hardened concrete or steel used in reinforcement.
6. NEVER drop or knock the vibrator head against any hard objects.
7. When the vibrator is out of the concrete mix for extended period of time, allow the engine to return to idle speed or simply turn the machine off.
8. After every job, or every 50 hours, the shaft should be disassembled, cleaned, inspected, lubricated, and reassembled.

CAUTION:

- I If the shaft begins to helix excessively during operation, stop and investigate. This is an indication of an overload condition.
- I The vibrator head is cooled by the concrete. operation of the vibrator head in air more than 2 minutes will cause overheating or the bearings which result in premature head failure.

2.7 When Operation is Finished

1. Bring the engine RPM down to idle speed.
2. Pull the vibrator head out of the concrete.
3. Turn the engine switch on the equipment to the OFF position.
4. Disconnect the vibrator shaft from the engine.
5. ALWAYS rinse or wipe off the vibrator head and shaft any wet concrete before it dries or hardens.

MAINTENANCE

3 MAINTENANCE

3.1 Periodic Maintenance Schedule

To get long use and free of trouble, it is essential to perform periodic maintenance on the engine and machine. A copy of the engine Operation Manual was supplied with the machine.

	Daily	After first 10 hours	Every 25 hours	Every 100 hours	Every 300 hours
Check fuel level.	○				
Check engine oil level.	○				
Inspect air filter. Replace as needed.	○				
Check that all bolted joints are tightened.	○				
Check external components.	○				
Replace the engine oil.		○		○	
Change air filter.			○		
Check and clean spark plug.				○	
Check fuel filter.				○	
Check fuel tank.				○	
Clean and lubricate the flexible shaft.				○	
Inspect and relubricate vibrator heads.				○	
Check and adjust valve clearance.					○

3.2 Lubrication

The long life and successful operation of any parts of machinery is dependent on frequent and thorough lubrication. Before using the machine, always check the oil and use proper oil with the correct type and grade as recommended.

NOTICE: DO NOT mix types of oil in gearbox and DO NOT overfill the oil. Damage to the machine may occur if oils are mixed or overfilled. See Technical Data for oil quantity and type.

3.3 Spark Plug

Check and clean spark plugs regularly. A fouled, dirty spark plug may cause hard starting and poor engine performance. Set spark plug gap to recommended clearance. Refer to engine manual.



WARNING

The muffler and engine cylinder become very hot during operation and remain hot for a while after stopping the engine. Allow engine to cool before removing spark plug.

NOTICE: A loose spark plug can become very hot and may cause engine damage.

3.4 Air Cleaner

Maintaining a clean engine will extend engine life. Keep air filter clean at all times. Clean air filter using the recommended solvent daily. See engine manual for proper cleaning procedure. Let the filter dry before reinstalling.



WARNING

NEVER use gasoline or other types of low flash point solvents for cleaning the air cleaner. A fire or explosion could result.

3.5 Transporting

- I ALWAYS shut down engine before transporting.
- I Tighten fuel tank cap and close fuel cock to prevent fuel from spilling.

3.6 Storage

For storage the machine for over 30 days, the following is required:

- I Change engine oil and see the description in engine manual.
- I Clean all external parts of the engine and frame with a soft cloth.
- I Cover the machine and store in a clean, dry area.

MAINTENANCE

3.7 Troubleshooting

SYMPTOM	POSSIBLE CAUSES	SOLUTION
Flexible shaft is too hot to hold.	No lubrication?	Grease inner core.
Vibrator does not develop full speed.	Engine?	Deposits built up in engine. Check engine air filter. Throttle is defective or out of adjustment.
Vibrating action is erratic.	Head or flexible shaft? Clutch?	Check head or flexible shaft damage. Check clutch wear.
Vibrator stops shaking, continues to spin without resuming shaking action.	Metal dust may have accumulated in contact points?	Clean contact points.

TECHNICAL DATA

4. TECHNICAL DATA

Drive Unit

Model No.	Power kw (hp)
MPG3215	1.2 (1.6)
MPG3225	1.2 (1.6)
MPG3815	1.2 (1.6)
MPG3825	1.2 (1.6)

Vibrator Head

Dia x Length (mm x m)	Vibrator Amplitude mm	Frequency Hz	Revolution of Flexible Shaft rpm
32 x 1.5	1	225	3000-3600
32 x 2.5	1	225	3000-3600
38 x 1.5	1.2	225	3000-3600
38 x 2.5	1.2	225	3000-3600

WARRANTY

5. WARRANTY

MASTERPAC products are covered by warranty for a period of twelve (12) months from the date of purchase against defects in material or workmanship provided that:

- I The product concerned has been operated and maintained in accordance with the operating instructions.
- I Has not been damaged by accident, misuse or abuse.
- I Has not been tampered with or repaired by any unauthorized person.

The owner is responsible for the cost of transportation to and from the authorized repairer and the unit is at the owners risk while in transit to and from the repairer.

Impact damage is not covered under warranty. Clutches are not covered under any warranty.

Engines are officially guaranteed by Honda manufacturer. Please refer to the annex for engine warranty.



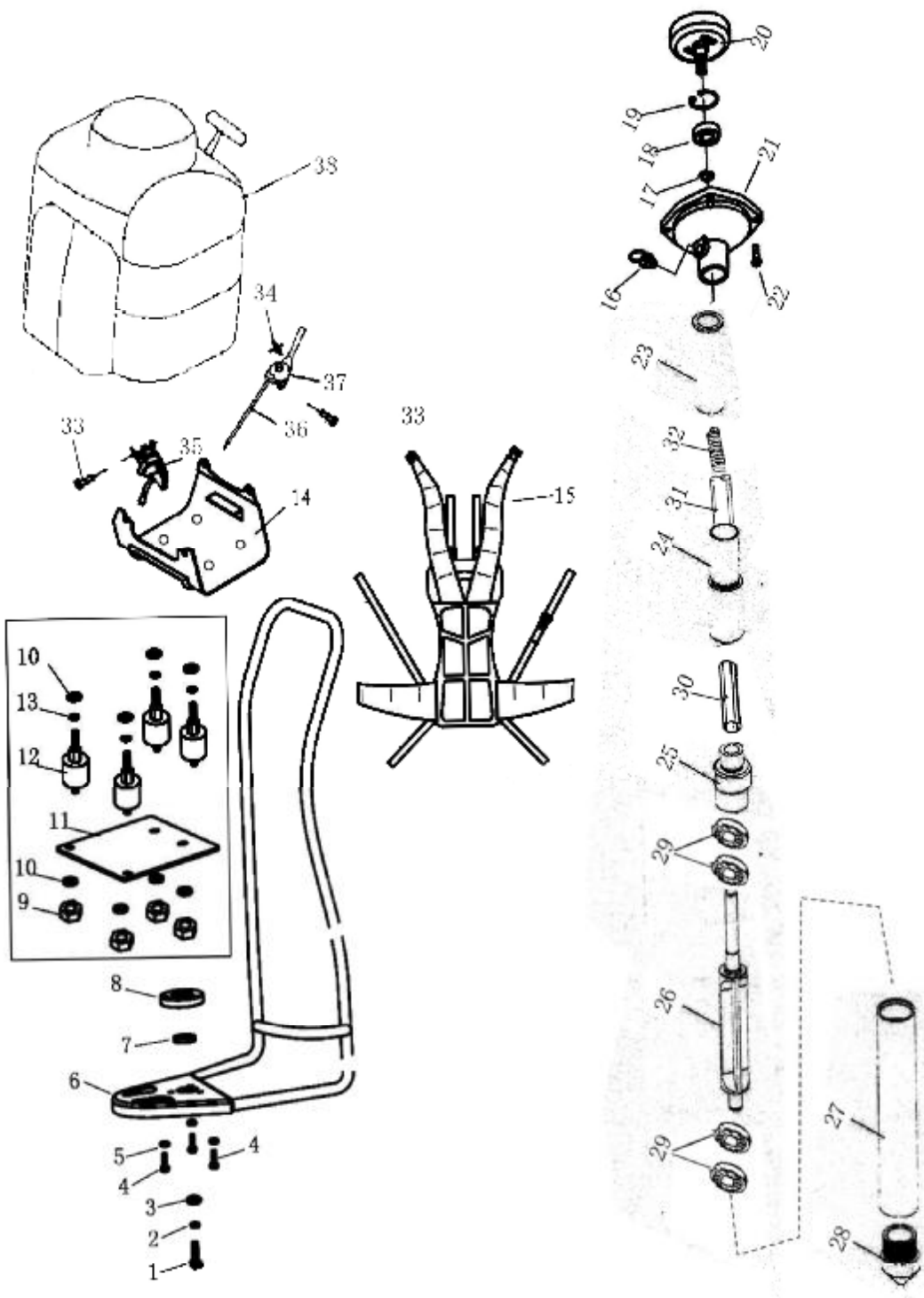
MASALTA®



MPG PORTABLE CONCRETE VIBRATOR POKER DRIVE PARTS LIST



PARTS LIST
MPG SERIES



**PARTS LIST
MPG SERIES**

ITEM NO.	PARTS NO.	DESCRIPTION	QTY	REMARK
1	GB/T5783	BOLT 8X20-8.8	1	
2	GB/T859-M8	WASHER 8	1	
3	GB/T96	WASHER 8	1	
4	GB/T5783	BOLT M6X14-8.8	3	
5	GB/T859-M6	WASHER 6	3	
6	BG431.1.1	SHOULDER FRAME COMP.	1	
7	GB/T276	BEARING 6002-2Z/P6	1	
8	BG431.1-1	BEARING HOLDER	1	
9	GB/T6170	NUT M5	4	
10	GB/T848	WASHER 5	8	
11	BG520A.1A.1	WHIRLABOUT	1	
12	BG431.3	CUSHION RUBBER COMP.	4	
13	GB/T859-M5	WASHER 5	4	
14	PBP.03.01	STAND	1	
15	BG431.2	SHOULDER BELT ASSY	1	
16	BG305.2.1	PIN	1	
17	GB/T894.1	STOP RING 15	1	
18	GB/T276	BEARING 6202-2RZ/P6	1	
19	GB/T893.1	STOP RING 35	1	
20	BG-328.8.1	CLUTCH DRUM COMP.	1	
21	BG430.2.1-1	CLUTCH CASE	1	
22	GB/T9074.13	SCREW M6X20	4	
23	PBP.01.02-1	HOSE JOINT (32MM)	1	FOR MPG3215、MPG3225
	PBP.01.02-2	HOSE JOINT (38MM)	1	FOR MPG3815、MPG3825
24	PBP.01.01-1	HOSE COUPLING (32MM)	1	FOR MPG3215、MPG3225
	PBP.01.01-2	HOSE COUPLING (38MM)	1	FOR MPG3815、MPG3825
25	MPG.01.05-1	CONNECTOR(32MM)	1	FOR MPG3215、MPG3225
	MPG.01.05-2	CONNECTOR(38MM)	1	FOR MPG3815、MPG3825
26	PBP.02.04-1	ECCENTRIC BEARING (32MM)	1	FOR MPG3215、MPG3225
	PBP.02.04-2	ECCENTRIC BEARING (38MM)	1	FOR MPG3815、MPG3825
27	MPG.01.03-1	HOUSING(32MM)	1	FOR MPG3215、MPG3225
	MPG.01.03-2	HOUSING(38MM)	1	FOR MPG3815、MPG3825
28	MPG.01.01-1	POINT (32MM)	1	FOR MPG3215、MPG3225
	MPG.01.01-2	POINT (38MM)	1	FOR MPG3815、MPG3825
29	MPG.01.02	BEARING (NSK)	4	
30	PBP.01.03-1	SHAFT JOINT (32MM)	1	FOR MPG3215、MPG3225
	PBP.01.03-2	SHAFT JOINT (38MM)	1	FOR MPG3815、MPG3825
31	PBP.01.05.01-1	HOSE (32MM+1.5M)	1	FOR MPG3215
	PBP.01.05.01-2	HOSE (32MM+2.5M)	1	FOR MPG3225
	PBP.01.05.02-1	HOSE (38MM+1.5M)	1	FOR MPG3815
	PBP.01.05.02-2	HOSE (38MM+2.5M)	1	FOR MPG3825
32	PBP.01.04.01-1	FLEXIBLE SHAFT(32MM+1.5M)	1	FOR MPG3215
	PBP.01.04.01-2	FLEXIBLE SHAFT(32MM+2.5M)	1	FOR MPG3225
	PBP.01.04.02-1	FLEXIBLE SHAFT(38MM+1.5M)	1	FOR MPG3815
	PBP.01.04.02-2	FLEXIBLE SHAFT(38MM+2.5M)	1	FOR MPG3825
33	GB6170-M4	BOLT M4	2	
34	GB97.1-4	NUT	1	
35	PBP.03.02	ON OFF SWITCH	1	
36	PBP.03.03	THROTTLE WIRE	1	
37	PBP.03.04	THROTTLE LEVER	1	
38	CHINESE 1.5HP	PETROL ENGINE	1	