



CBNA-Series 2-Stage Hydraulic Gear Pumps

11GPM • 13GPM • 16GPM



Shaft Diameter (OD): 1/2" (0.5 inch)
 Keyway: 1/8" (0.125")
 Shaft Length: 1.38"
 Mounting Flange Bolt Circle: 2.85"
 Bolt Spacing: 2" (on side)
 Aluminum Body
 Number of Stages: 2 (High & Low)

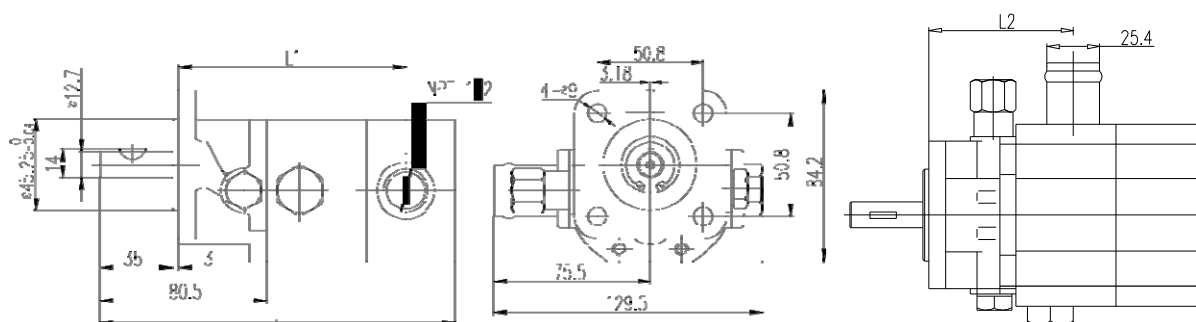
Inlet: Nipple for 1" ID Suction Hose
 Outlet: 1/2" NPT (F)
 Shaft Rotation: Clockwise (CW)
 Recommended Engine Size:

- 11GPM = 5hp
- 13GPM = 6.5hp
- 16GPM = 8hp



**DO NOT USE
SAE STRAIGHT
THREAD
O-RING (ORB) FITTINGS**

Hydraulic Fluid: AW-32 10-Weight (ISO 32) or AW-46 20-Weight (ISO 46) or Dexron III ATF
DO NOT USE "UNIVERSAL" HYDRAULIC OIL or "TRACTOR" TRANSMISSION FLUID, SUCH AS "303"
 Filters on the suction side must be no finer than 150 micron to prevent cavitation and pump failure
 10-25 micron filters should only be used on the return side
 Hydraulic fluid reservoir should be mounted high enough to ensure sufficient flow to the pump

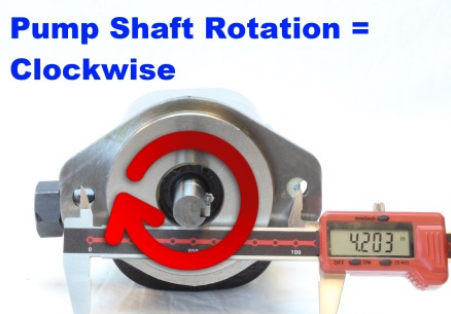


MODEL	SKU	FLOW RATE (GPM) @3,600 RPM	PRESSURE		DISPLACEMENT		DISPLACEMENT		PORT SIZE	
			PSI		Cu.in. /Rev		GPM		INLET	OUTLET
			LOW STAGE	HIGH STAGE	LOW STAGE	HIGH STAGE	LOW STAGE	HIGH STAGE		
CBNA-8.8/2.1	32-129-PUMP-11	11	600	3,000	0.537	0.13	8.4	2.1	Barb for 1" ID Hose	1/2" NPT(F)
CBNA-10.9/2.1	32-129-PUMP-13	13	600	3,000	0.665	0.13	10.45	2.1		
CBNA-13.0/4.2	32-129-PUMP-16	16	600	3,000	0.793	0.265	12.4	4.1		



CBDN-Series 2-Stage Hydraulic Gear Pumps

22GPM • 28GPM



Shaft Diameter: 5/8" (0.625")
 Keyway: 3/16" (0.1875")
 Shaft Length: 1-1/2"
 Bolt Circle: 4.189"
 Aluminum Body

Engine Size (Minimum):

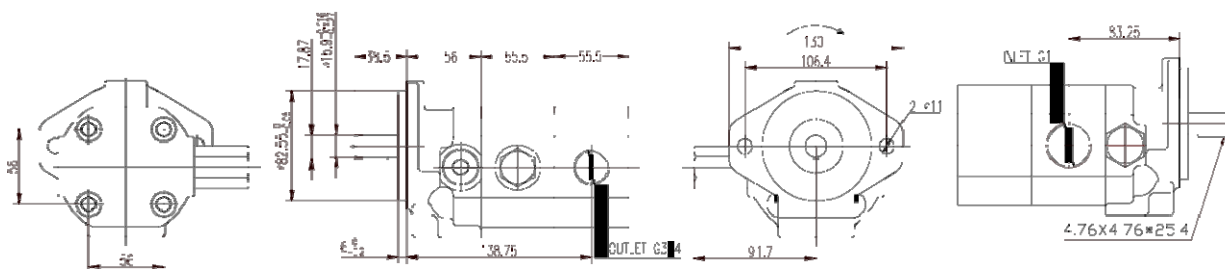
- 22GPM = 13hp, 15hp recommended
- 28GPM = 18hp, 20+hp recommended

Inlet: 1" NPT (F) for 1-1/4" ID Suction Hose
 Outlet: 3/4" NPT (F)



**DO NOT USE
 SAE STRAIGHT THREAD
 O-RING (ORB) FITTINGS**

Hydraulic Fluid: AW-32 10-Weight (ISO 32) or AW-46 20-Weight (ISO 46) or Dexron III ATF
DO NOT USE "UNIVERSAL" HYDRAULIC OIL or "TRACTOR" TRANSMISSION FLUID, SUCH AS "303"
 Filters on the suction side must be no finer than 150 micron to prevent cavitation and pump failure
 10-25 micron filters should only be used on the return side
 Hydraulic fluid reservoir should be mounted high enough to ensure sufficient flow to the pump



MODEL	SKU	FLOW RATE (GPM) @3,600 RPM	PRESSURE		DISPLACEMENT		DISPLACEMENT		PORT SIZE	
			PSI		Cu.in. /Rev		GPM		INLET	OUTLET
			LOW STAGE	HIGH STAGE	LOW STAGE	HIGH STAGE	LOW STAGE	HIGH STAGE		
CBDN-16/7	32-129-PUMP-22	22	600	3,000	0.99	0.43	15.4	6.7	1" NPT(F) for 1-1/4" ID Hose Barb Fitting	3/4" NPT(F)
CBDN-22/7	32-129-PUMP-28	28	600	3,000	1.38	0.43	21.5	6.7		